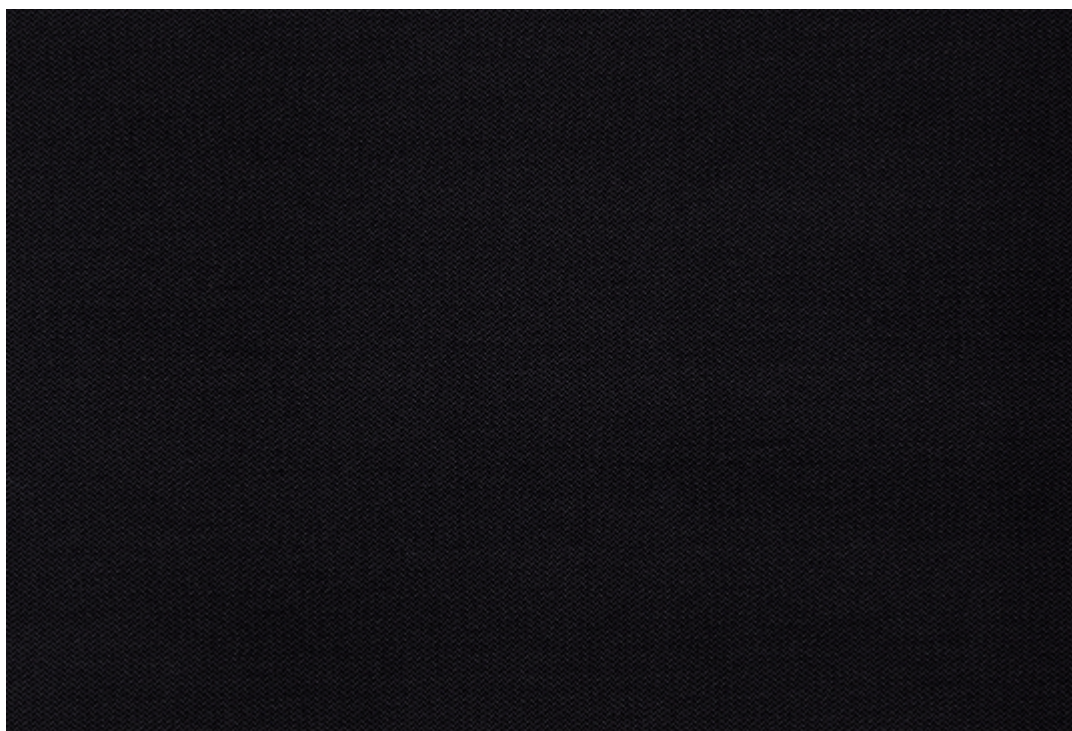


# Unlit Blockout Louise Sigvardt

Openness factor 0%  
Solar reflection 70%  
Metallised blockout textile



## Specification details

Openness factor	0%
Composition	100% polyester laminated FR blackout with aluminium backing
Fabric width	300 cm (118 inches)
Weight	335 g/m <sup>2</sup>
Thickness	0.35 mm
IR emissivity metal side	0.29
Light fastness	Interior 4-6, Exterior 8 (ISO105-B02)
Fire tests	EN 13501-1 (B-s1, d0), DIN 4102 B1, BS 5867 part 2 type B, NFPA 701
Environment	GREENGUARD Gold, STANDARD 100 Class IV by OEKO-TEX®, Health Product Declaration (HPD). Comply with REACH and RoHS2. PFAS free, Phthalate free, Formaldehyde free, Antimicrobials free, PVC free.

## Technical details

Colour	Optical properties acc. to EN 14500:2021 and EN 14501:2021					
	Rs (%)	Ts (%)	Tv (%)	Tuv (%)	Ra	Glare control rating
100	70	0	0	0	N/A	4
130	70	0	0	0	N/A	4
150	70	0	0	0	N/A	4
170	70	0	0	0	N/A	4
190	70	0	0	0	N/A	4
220	70	0	0	0	N/A	4
230	70	0	0	0	N/A	4
790	70	0	0	0	N/A	4

Colour	Solar control double glazing G			Solar control triple glazing I		
	gtot/SHGC (%)	Utot-value (W/m <sup>2</sup> K)	Tv, tot (%)	gtot/SHGC (%)	Utot-value (W/m <sup>2</sup> K)	Tv, tot (%)
100	13	0.75	0	15	0.51	0
130	13	0.75	0	15	0.51	0
150	13	0.75	0	15	0.51	0
170	13	0.75	0	15	0.51	0
190	13	0.75	0	15	0.51	0
220	13	0.75	0	15	0.51	0
230	13	0.75	0	15	0.51	0
790	13	0.75	0	15	0.51	0

**Rs:** Solar reflection | **Ts:** Solar transmission | **As:** Solar absorption calculation:  $100 - Rs - Ts = As$

**Tv:** Visual light transmission | **Tuv:** UV transmission | **Ra:** Colour rendering index

**Glazing G:**  $g=33\% / U=1.0 / Tv=70\%$  (acc. to EN14501: 2021) | **Glazing I:**  $g=31\% / U=0.6 / Tv=64\%$  (with ref. panes acc. to EN 14501:2021)

**gtot/SHGC:** Solar heat gain through total fenestration | **Utot:** Thermal heat loss (or gain) through total fenestration

**Tv, tot:** Total light transmission through total fenestration

# Unlit Blockout



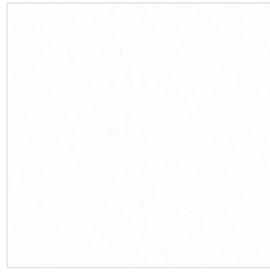
220



230



150



100



130



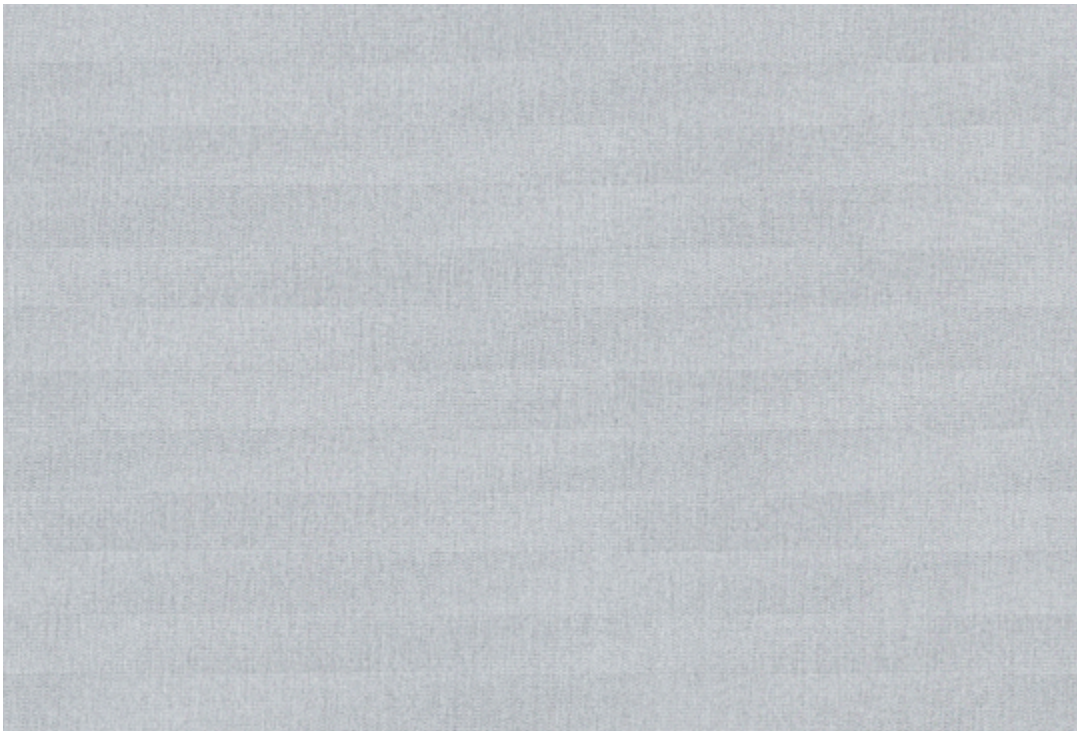
790



170



190



## Unlit Blockout

Design: Louise Sigvardt

DK

**Anvendelse** Rullegardin.

**Beskrivelse** 100 % polyesterlamineret FR-blokering med aluminium bagside.

Bredde 300 cm. Vægt 335 g/m<sup>2</sup>.

Tykkelse 0.35 mm. Transfer tryk.

Nuanceforskel kan forekomme.

**Lysægted** Indvendigt 4-6, Udvendigt 8 (ISO 105-B02).

**Flammesikring** EN 13501-1 (B-s1, d0), DIN 4102 B1, BS 5867 part 2 type B, NFPA 701 (Kopi af testrapport kan rekvireres).

**Vedligeholdelse** Se ISO symboler. Kan børstes eller støvsuges (nedsat sug) med børstemundstykke. Ved kraftigere tilsmudsning anbefales det at kontakte et professionelt renseri.

UK

**Application** Roller blind.

**Description** 100% polyester laminated FR blockout with aluminium backing.

Width 300 cm (118 inches). Weight 335 g/m<sup>2</sup>.

Thickness 0.35 mm. Transfer print.

Colour differences may occur.

**Lightfastness** Interior 4-6, Exterior 8. (ISO 105-B02)

**Flame resistance** EN 13501-1 (B-s1, d0), DIN 4102 B1, BS 5867 part 2 type B, NFPA 701 (Copy of test report available).

**Care** See ISO symbols. Can be brushed or carefully vacuumed (reduced suction power) with a brush nozzle. In case of considerable staining, we recommend contacting a professional dry cleaner.

DE

**Anwendungsbereich** Rollos.

**Beschreibung** 100% Polyester laminiertes FR-Blockout mit Aluminiumrückseite. Breite max. 300 cm. Gewicht 335 g/m<sup>2</sup>. Dicke 0.35 mm. Transferdruck. Farbunterschiede können vorkommen.

**Lichtechtheit** Innen 4-6, Äußeres 8. (ISO 105-B02)

**Flammschutz** EN 13501-1 (B-s1, d0), DIN 4102 B1, BS 5867 part 2 type B, NFPA 701 (Testbericht verfügbar).

**Pflege** Siehe ISO Pflegesymbole. Reinigung durch vorsichtiges Abbürsten oder saugen mit Bürstenaufsatz und reduzierter Leistung möglich. Bei starker Verschmutzung empfehlen wir einen professionellen Reinigungsdienst.

NL

**Toepassing** Rolgordijn.

**Omschrijving** 100% polyester gelamineerde FR blockout met aluminium achterkant.

Breedte 300 cm. Gewicht 335 g/m<sup>2</sup>.

Dikte 0.35 mm. Transfer print.

Kleurverschillen kunnen optreden.

**Lichtechtheid** Interieur 4-6, Exterieur 8. (ISO 105-B02)

**Brandwerendheid** EN 13501-1 (B-s1, d0), DIN 4102 B1, BS 5867 part 2 type B, NFPA 701 (Op aanvraag sturen wij u graag een kopie van het testrapport).

**Onderhoud** Zie de ISO symbolen. Kan schoongemaakt worden door middel van een borstel of een stofzuiger met borstelstuk op halve kracht. In het geval van serieuze vlekvorming, raden we aan contact op te nemen met een professionele reiniger.

FR

**Domaine d'utilisation** Store.

**Description** 100% polyester laminé FR blockout avec support en aluminium.

Largeur 300 cm. Poids 335 g/m<sup>2</sup>.

Épaisseur 0.35 mm. Impression par transfert.

Ecart des coloris possibles.

**Résistance à la lumière** Intérieur 4-6, Extérieur 8. (ISO 105-B02)

**Normes au feu** EN 13501-1 (B-s1, d0), DIN 4102 B1, BS 5867 part 2 type B, NFPA 701 (La copie du compte rendu des tests est disponible sur demande).

**Entretien** Voir les symboles ISO. Le tissu peut être brossé ou aspiré avec soin (puissance d'aspiration réduite) avec un embout en forme de brosse. Dans le cas où le tissu a été fortement taché, nous suggérons de contacter un pressing professionnel.

IT

**Destinazione d'uso** Tende a rullo.

**Caratteristiche** 100% poliestere laminato FR blockout con supporto in alluminio.

Altezza 300 cm. Peso 335 g/m<sup>2</sup>.

Spessore 0.35 mm. Transfer print.

Possibili differenze per colore.

**Resistenza alla luce** Interno 4-6, Esterno 8. (ISO 105-B02)

**Ignifugazione** EN 13501-1 (B-s1, d0), DIN 4102 B1, BS 5867 part 2 type B, NFPA 701 (Disponibile copia del test).

**Manutenzione** Per favore seguire simboli ISO. Può essere spazzolato oppure accuratamente aspirato (ridurre la potenza di aspirazione) con un ugello a spazzola. In caso di macchie considerevoli, si consiglia di contattare un lavasecco professionale.

ES

**Aplicación** Estor.

**Descripción** 100% poliéster laminado FR blockout con soporte de aluminio.

Anchura 300 cm. Peso 335 g/m<sup>2</sup>.

Grosor 0.35 mm. Impresión digital textil.

Posibles variaciones de color.

**Resistencia a la luz** Interior 4-6, Exterior 8. (ISO 105-B02)

**Resistencia al fuego** EN 13501-1 (B-s1, d0), DIN 4102 B1, BS 5867 part 2 type B, NFPA 701 (Copia del informe de ensayos disponible).

**Limpieza** Consulte los símbolos ISO. Se puede cepillar o aspirar con cuidado (baja intensidad de succión) con una boquilla de cepillo. En caso de manchas considerables, recomendamos contactar con un profesional de limpieza.

SE

**Användning** Rullgardin.

**Beskrivning** 100% polyesterlaminerad FR-blokering med aluminiumbaksida.

Bredd 300 cm. Vikt 335 g/m<sup>2</sup>.

Tjocklek 0.35 mm. Transfertryck.

Viss nyansskillnad kan förekomma.

**Ljushärdighet** Interiör 4-6, Exteriör 8. (ISO 105-B02)

**Flammskydd** EN 13501-1 (B-s1, d0), DIN 4102 B1, BS 5867 part 2 type B, NFPA 701 (Kopia av testrapport finns tillgänglig vid förfrågan).

**Underhåll** Se ISO symboler. Kan borstas eller försiktigt dammsugas med ett borstmunstycke. I händelse av fläckar rekommenderar vi att du lämnar in rullgardinen till kemtvätt.

ZH

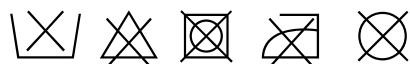
产品应用 遮阳卷帘。

产品详情 100% 聚酯层压 FR 阻隔材料, 铝质底衬。幅宽: 300厘米。克重: 335 克/平方米。厚度: 0.35毫米。转印。可能出现色差。

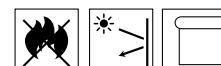
日晒色牢度 外层: 室内4-6, 8 (ISO 105-B02)。阻燃级别 欧洲标准EN 13501-1 (B-s1, d0)

)、DIN 4102 B1、BS 5867 第 2 部分 B 型、NFPA 701 (可提供检测报告副本)。保养须知

请参照ISO标识。可用毛刷或毛刷吸嘴(减少吸力)小心清理。如脏污较严重, 建议联系专业干洗服务。



Contact and further information kvadrat.dk



5 year warranty

### **Unlit Blockout**

*Unlit Blockout* by Louise Sigvardt is a premium metallised blockout textile designed to enhance any interior with a subtle shine and sophisticated elegance. This textile provides extensive control over privacy, glare, and thermal comfort. Its backside features an ultra-thin layer of aluminium that reflects sunlight to keep interiors cool in summer and insulates to retain warmth in winter, reducing potential heating and cooling costs as well as CO2 emissions. With its PFAS-free, flame-retardant properties and complete light-blocking capabilities, *Unlit Blockout* combines style and functionality, creating a uniform facade appearance. The colour palette, which features grey tones, a night blue, and two beige hues, provides versatile options for any space.

### **Louise Sigvardt**

Louise Sigvardt is a co-founder of the acclaimed Bunn Studio, a Copenhagen-based design studio working across fashion, architecture, and design. In recent years, they have collaborated with the celebrated fashion brands Everlane and Marimekko, and the furniture house Radnor. Their work has been recognised with numerous awards and showcased in leading international magazines.

Louise's background as a textile designer is evident in Bunn's rich yet minimal approach to design where texture is always a key element. For Louise, design is an immersive experience that begins with a narrative, an emotion or a captivating visual. She cites the application of textiles as the motivation in her career; *"I found out that I loved working with textiles, but what fascinates me even more, are all the different areas of application."*